

Robert P. Boeye  
Dennis R. Fox  
John A. Slover, Jr.  
Jeffrey B. Moorhouse  
Roger L. Strandlund  
Arthur W. Eggers  
Harvey A. Levin  
James S. Zmuda  
Jonathon C. Fox  
Franklin S. Mitvalsky  
Karia C. Steele

August 4, 2008

Ms. Marisol Simon  
Regional Administrator  
Federal Transit Administration  
Region V  
200 West Adams Street, Suite 320  
Chicago, IL 60606-5253

**Re: Allerton Charter Coach, Inc., Charter Complaint No. 2007-10**

Dear Ms. Simon:

This letter is being provided in accordance with your investigation and gathering of additional evidence in the adjudication of the above-referenced complaint. MetroLINK appreciates the additional time which has been allowed to accommodate its investigation. In some cases in the responses hereinafter provided, it is noted that MetroLINK's investigation is continuing to the extent that persons not under MetroLINK's control become available in the future. In the event any additional information is deemed necessary, you are invited to contact the undersigned.

FTA Inquiry No. 1: With regards to bus service along the routes from the parking lots to the golf course (and back), did MetroLINK intend that this service would be available to pick up and/or drop off passengers at any of the regular fixed route intermediate bus stops pursuant to either a demand responsive request or at the request of people waiting at those intermediate stops or from riding passengers?

Response: Yes. As was set forth in MetroLINK's initial response dated January, 2008, the John Deere Classic entrance was in close proximity to a fixed route (refer to the Rider's Guide and map with MetroLINK's initial response, FTA 2 – FTA 7).

**Reply to  
Moline Office:**

600 First Midwest  
Bank Building  
506 – 15th Street  
P.O. Box 719  
Moline, Illinois  
61266-0719

Telephone:  
309.764.8361

Facsimile:  
309.764.7936

**Wheaton Office:**

123 W. Front Street  
Suite 200  
Wheaton, Illinois  
60187

Telephone:  
800.764.4999

Ms. Marisol Simon  
August 4, 2008  
Page Two

FTA Inquiry No. 2: Did MetroLINK advertise that its golf tournament service that transported people from the parking lots to golf course (and back) would pick up and drop off passengers along the parking lot-to-golf course route at the fixed route bus stops either as a demand response pick up or a normal bus stop pick up?

Response: Yes. Refer to the portions of the Rider's Guide (attached as FTA S68 – FTA S73 with this response) relating to directions to the public concerning signaling operators for boarding and stopping, commonly known as “flag stops”.

FTA Inquiry No. 3: With regards to bus service along the routes from the parking lots to the golf course (and back), did MetroLINK receive any request for and/or actually pick up and drop off any passengers at any of the regular fixed route intermediate bus stops pursuant to a demand responsive request?

Response: MetroLINK has endeavored to direct inquiry to all operators to whom this Inquiry No. 3 pertains. The results of MetroLINK's investigation are set forth as FTA S74.

FTA Inquiry No. 4: With regards to the bus service along the routes from the parking lots to the golf course (and back), did MetroLINK pick up and drop off any passengers at any of the regular fixed route intermediate bus stops not in response to a demand response request, but merely because people were waiting at the bus stop or riding passengers requested to be let off?

Ms. Marisol Simon  
August 4, 2008  
Page Three

Response: MetroLINK has endeavored to direct inquiry to all operators to whom this Inquiry No. 4 pertains. The results of MetroLINK's investigation are set forth as FTA S74.

FTA Inquiry No. 5: With regards to the bus service along the routes from the parking lots to the golf course (and back), did MetroLINK intend this service to be "express" service from the parking lots to the golf course with no intermediate stops? If so, was this service advertised to the public as this type of service?

Response: No. Therefore, the final question within this Inquiry No. 5 does not call for a response.

FTA Inquiry No. 6: Were the MetroLINK buses specially marked in a manner that would distinguish them from the usual fixed route bus service? Did the buses display any thing that would indicate that this was bus service for the golf tournament?

Response: MetroLINK has endeavored to investigate the markings on the buses in service at the time of the 2007 John Deere Classic. At this time the investigation has revealed no instances where any bus was specially marked, subject to the usual markings of destination signs and advertising displayed in the ordinary course. In other words, MetroLINK acknowledges that some JDC-related advertising was likely present on various buses; and certain destinations identifying park and ride locations would have been utilized by operators in connection with the control of their respective buses.

Ms. Marisol Simon  
August 4, 2008  
Page Four

FTA Inquiry No. 7: In providing bus service from the parking lots to the golf course (and back), did any buses travel along routes or travel to passenger pick-up or drop-off points which were not MetroLINK's regular fixed routes?

Response: All buses traveled along MetroLINK's regular fixed routes. It should be noted that MetroLINK's observation of the buses at the time of the 2007 John Deere Classic has revealed that there exists some deviation between operators as to where the respective buses stopped along the regular fixed routes.

FTA Inquiry No. 8: The service announcement, Exhibit FTA 3, indicates different categories of parking patrons. Were public parking patrons who were not considered golf tournament VIPs or volunteers dropped off at one location, but VIP parkers were taken to another location? Were either of either of these locations as a result fixed route bus stop? If these stops were not regular fixed route stops, was the public notified of the new stops as new service? Were either of these locations marked as a bus stop?

Response: MetroLINK's investigation has revealed that public parking patrons, VIPs and volunteers did not necessarily exit the buses at the same location; however, it has appeared that all locations where passengers disembarked from the bus were marked as stops, with the exception of flag stops. (Refer to the response to Inquiry No. 2)

FTA Inquiry No. 9: Were the parking lots that were served by MetroLINK's bus service to the golf course bus stops along MetroLINK's regular fixed routes?

Ms. Marisol Simon  
August 4, 2008  
Page Five

Response: All parking lots referred to in this Inquiry No. 9 were on MetroLINK's regular fixed routes. The response to Inquiry No. 7 is incorporated as a supplemental response to the foregoing.

FTA Inquiry No. 10: Was there a golf tournament-specific bus service route notice provided to the public other than Exhibit FTA 3? Please provide copies and when and how these notices, including Exhibit FTA 3, were provided to the public.

Response: Yes. Notice was provided to the public via local media. An example of such notice (via the Quad City Times newspaper) is attached as FTA S75 – FTA S76.

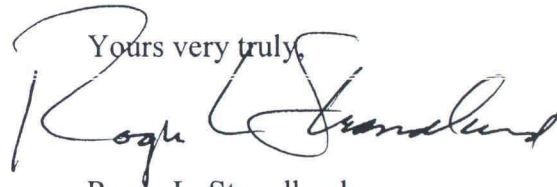
FTA Inquiry No. 11: Who and how was it determined how much, where and who would collect the bus fares? Who and how was it determined where the parking lots were to be? Who and how was it determined how fares collected would be remitted to MetroLINK? Who and how was it determined that there would be different locations and services for VIPs and volunteers? Were VIPs and volunteers charged for bus transportation?

Response: MetroLINK determined the collection of fares and the amount of the fare. MetroLINK influenced/determined the location of the parking lots. MetroLINK determined how fares would be remitted. MetroLINK determined the service levels; and the classification of passengers (VIPs, volunteers, etc.) was immaterial to MetroLINK. It should be noted that the John Deere Classic determined the classification of passengers; and that, while VIPs might have been distinguished by being charged (as opposed to volunteers), all passengers received the same level and quality of service and MetroLINK made no distinction between VIPs and volunteers in providing bus trips to all.

Ms. Marisol Simon  
August 4, 2008  
Page Six

FTA Inquiry No. 12: Did anyone affiliated with the golf tournament request MetroLINK to provide bus service for the golf tournament?

Response: For the period applicable to this Inquiry No. 12, no employee or director of the John Deere Classic made a request to MetroLINK to provide the bus service.

Yours very truly,  
  
Roger L. Strandlund

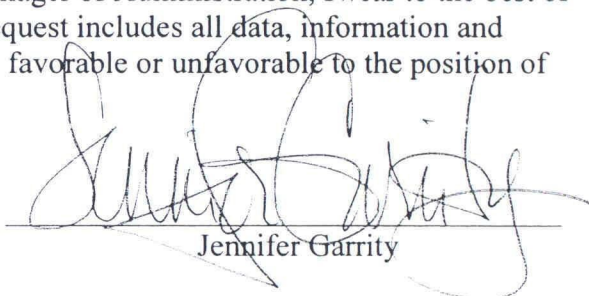
RLS/mrk

Cc: Mr. Ted Uyeno, FTA Regional Counsel, Region X  
Ms. Elizabeth Martineau, FTA, Office of the Chief Counsel  
Mr. Jeffrey A. Nelson, General Manager, MetroLINK  
Mr. Edward J. Gill, Jr.  
Mr. Richard P. Schweitzer

AFFIRMATION

I, Jennifer Garrity, MetroLINK's Manager of Administration, swear to the best of my knowledge and belief, that this request includes all data, information and views relevant to the matter, whether favorable or unfavorable to the position of MetroLINK.

Date: 8/4/08

  
Jennifer Garrity

# Rider's Guide

## S E R V I N G

Carbon Cliff • Colona •  
East Moline • Hampton • Milan •  
Moline • Rock Island • Silvis

10  
YEARS

## Table of Contents

### GENERAL INFORMATION

How to Ride	2
Safety	3
How to read a schedule	4
Rider Information	5-6
Fares	7
Cell phone bus info	8
Holidays/Bad Weather	9
Ticket Outlets	10

### Monday - Friday Routes & Schedules

Tyson Foods	11
Route 10 Red	12
Route 20 Blue	14
Route 30 Green	16
Route 30-Evenings	18
Route 40 Orange	20
Route 50 Olive	22
Route 53 Lime	24
Route 55 Sky Blue	26
Route 57 Brown	28
Route 60 Yellow	30
Route 60/40-Evenings	32
Route 70 Purple	34
Route 80 Arsenal	36
Route 90 Teal	38

### Saturday Routes and Schedules

Saturday Map	40
Route 10 Red	42
Route 20 Blue	44
Route 30 Green	46
Route 40 Orange	48
Route 50 Olive	50
Route 53 Lime	51
Route 55 Sky Blue	52
Route 57 Brown	53
Route 60 Yellow	54
Route 70 Purple	56
Route 90 Teal	58

### Sunday Routes and Schedules

Sunday Map	60
Route 10 Red	62
Route 20 Blue	64
Route 30 Green	66
Route 40 Orange	68
Route 60 Yellow	70
Bridgeline	72

Metrolink

[www.qcmetrolink.com](http://www.qcmetrolink.com)

# How to ride the Bus

This Rider's Guide is designed to help you take advantage of the mass transit options available to you as a Quad City resident or visitor. MetroLINK serves the Illinois communities of Carbon Cliff, Colona, East Moline, Hampton, Milan, Moline, Rock Island and Silvis.

## **HOW DO I GET STARTED?**

---

Plan your trip from start to finish by asking yourself the following questions:

1. Where will my trip begin?
2. Where do I want to go?
3. When do I want to get there?
4. When do I want to return?
5. What day will I be traveling?

## **PASSENGER TIPS**

---

Arrive at your stop a few minutes early. Wait on the sidewalk where the operator can see you.

As the bus approaches, check the sign above the front window to make sure it's the route and destination you want. If it is, signal the operator that you wish to board.

Be ready with exact change or a valid ticket, transfer receipt or monthly pass.

Stay back from the curb and wait until the bus comes to a complete stop. Then, board and pay your fare.

The operator will announce major stops and intersections. If you are not familiar with the area, you can ask the operator to call out your destination.

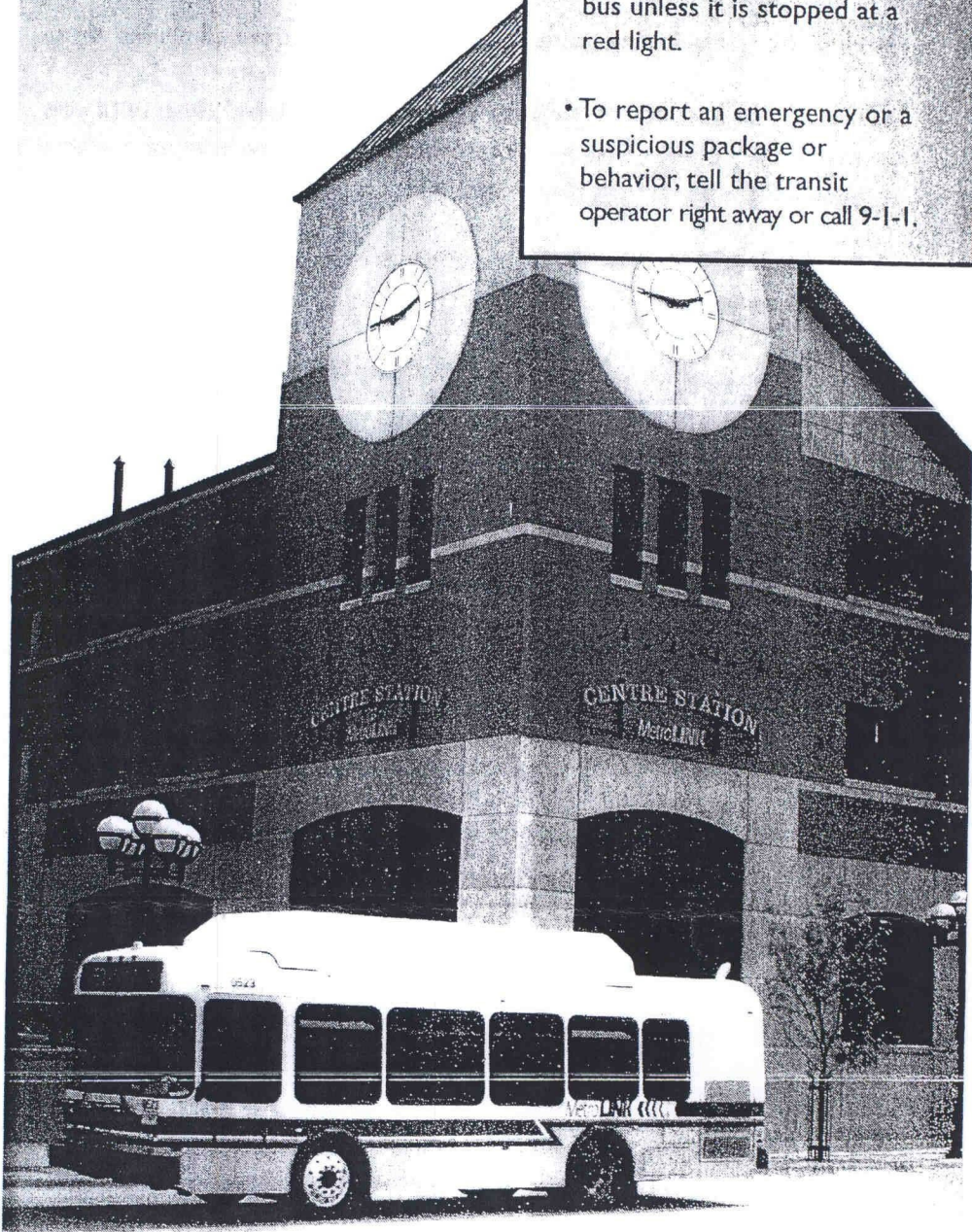
When you want to get off, pull the bell cord or push the plastic strip near the window to request the next stop.

Gather all your personal items and exit through the front or rear door. Step away from the bus and wait until it leaves before crossing the street.



*For your safety!*

- Riding at night? Wear light-colored clothing and carry a reflector or flashlight so the operator can see you.
- Never cross in front of a bus unless it is stopped at a red light.
- To report an emergency or a suspicious package or behavior, tell the transit operator right away or call 9-1-1.



# How to read the schedule

- 1) Look at your system map and determine the location nearest you to board your desired route.
- 2) Work backwards. Determine what time you want to arrive at your destination.
- 3) Find the nearest timepoint that matches your desired arrival time.
- 4) Back track along the row with your selected arrival time until you reach the column that has your location (or along the way) where you will be picked up. (from step 1)
- 5) Be ready at your nearest location 5 minutes prior to scheduled time.

Repeat process with your new location and destination to return home or to travel elsewhere.

TIMEPOINT

①	⑥	⑦
Centre Station Moline	41st St. & 23rd Av. Moline	Black Hawk College
5:45	6:00	6:10
6:15	6:30	6:40
6:45	7:00	7:10

DEPARTURE/ARRIVALTIMES

## KEY TO MAP SYMBOLS

◆ Terminal / Main Transfer Location	➔ Direction of Travel
▼ Time and Transfer Point	➡ Bus Turns
② Time Point ONLY	■ Points of Interest
Ⓣ Transfer Point by demand; ask driver for availability	--- City Limits
■ Bus Shelters	/ Route or Bus Terminates

*These symbols are common to all maps and help you get around town with ease!*

## RIDER ETIQUETTE

1. After paying your fare move to a vacant seat. Remember that the front seats of the bus are reserved for seniors and persons with disabilities.
2. Please do not smoke, eat or drink while riding the bus.
3. No loud radios or tape players allowed.
4. If you have a child in a stroller, remove the child from the stroller and move the stroller away from the center of the aisle.

## GETTING OFF THE BUS

Be watchful of your destination. When you are about a half a block from your destination, inform the driver that you want to stop by pulling the cord or pressing the black strip near the windows. The bus will only stop at corners or a designated bus stop.

## TRANSFERS

A transfer allows you to transfer from the original bus you are riding to another bus in order to complete a one-way trip. The transfer can only be used with the first bus that leaves your connecting point. Transfers are free if you stay within the same transit system. You may transfer at any main terminal or at any location noted with a "T" on the system schedules.

*You may transfer between the transit systems at these locations:*

- At Centre Station you can transfer between MetroLINK and Bettendorf Transit.
- At The District and the Ground Transportation Center you can transfer between MetroLINK and CitiBus.

You may have to pay an additional fee when transferring between the systems.

From MetroLINK to Bettendorf Bridgeline	
to CitiBus	<b>30¢</b>
From MetroLINK to CitiBus	<b>10¢</b>
From Bettendorf Transit to MetroLINK	<b>Free</b>
From Bettendorf Transit to CitiBus	<b>Free</b>
From CitiBus to MetroLINK	<b>5¢</b>
From CitiBus to Bettendorf Bridgeline	
to MetroLINK	<b>30¢</b>
From MetroLINK fixed route to Tyson route	<b>20¢</b>

# Rider information

## TIMES

<b>Weekday Service</b> .....	5:30 a.m. - 9:00 p.m.
<b>Saturday Service</b> .....	7:30 a.m. - 5:30 p.m.
<b>Sunday Service</b> .....	8:00 a.m. - 4:30 p.m.

## SUBSCRIPTION SERVICES

Buses are available for a subscription service from 5:00 a.m.-8:00 a.m. on Saturdays and 6:00 a.m.-8:30 a.m. on Sunday. Priority will be given to those riding to work. Arrangements to be picked up on weekends may be made through MetroLINK. Arrangements for less frequent trips may be made as needed. All reservations will be taken by telephone during business hours, Monday - Wednesday and Thursday until 3:00 p.m. Reservations should be confirmed on Friday between 3:00 p.m. and 10:00 p.m. **Call MetroLINK at (309) 788-3360.**

## LOCATIONS

<b>Centre Station</b>	<b>QC Transit Facility</b>	<b>Administration</b>
1200 River Drive Moline, IL 61265 309-788-3360	2929 - 5th Avenue Rock Island, IL 61201 309-788-3360	1515 River Drive Moline, IL 61265 309-788-3360

## CUSTOMER SERVICE

If you have questions about any MetroLINK service, please call one of our customer representatives at **(309) 788-3360** or you may contact us through our website at **[www.qcmetrolink.com](http://www.qcmetrolink.com)**.

## LOST AND FOUND

If you lose an article or personal belonging on the bus, call **(309) 764-4257**. Articles found are kept 30 days and can be identified and claimed Monday through Friday, 10 a.m.-3 p.m., at Centre Station, 1200 River Drive, Moline.

## IOWA TRANSIT

<b>Davenport</b>	563-888-2151
<b>Bettendorf</b>	563-344-4085 M-F 8:00 a.m. – 6:00 p.m. 563-386-1350 Saturday 8:30 a.m. – 5:30 p.m.

John Deere Classic 2007 Extra Board Drivers	Peterson	Williamson	Porter	Russell	Olvera	V Anderson	Jackson	Avila	Blanks	Jeffries	L Allen	Liaca	Brown	Ross	NO	YES
1. With regards to bus service along the routes from the parking lots to the golf course and back, did MetroLINK receive any request for and/or actually pick up and drop off any passengers at any of the regular fixed route intermediate bus stops pursuant to a demand responsive request?	No	Yes	No	Yes	Yes	Yes	No	No	No	No	Yes	Yes	Yes	Yes	6	8
2. With regards to the bus service along the routes from the parking lots to the golf course and back, did MetroLINK pick up or drop off any passengers at any of the regular fixed route intermediate bus stops not in response to a demand response request, but merely because people were waiting at the bus stop or riding passengers requested to be let off?	No	No	No	Yes	Yes	No	No	No	No	No	Yes	Yes	Yes	Yes	7	7

Brady  
Sohnel

**AT A GLANCE**

**What:** John Deere Classic  
**When:** Runs through Sunday  
second round tee off at 7 a.m. today  
**Where:** TPC at Deere Run, Silvis, Ill. (7,163 yards, par 71)  
**Format:** 72-hole stroke play with cut to the lowest 70 scores and tee after 36 holes  
**Prize:** \$4.1 million (\$738,000 to the winner)  
**Defending champ:** John Senden

**Tuning in**  
The Golf Channel is scheduled to provide live coverage today from 2 to 5 p.m.

**Tickets and parking**  
Tentative \$20  
Clubhouse \$34  
Children 12 and under free  
General parking \$5

**Shuttle buses**  
There is no spectator parking at Deere Run, but shuttle buses will take fans to the main gate from four nearby locations from 8 a.m. to 11 p.m.  
■ Moline High School, 3000 Avenue of the Cities, Moline (public)  
■ Quad-City Downs, East Moline (public)  
■ Rock Island County Fairgrounds, Archer Avenue and Avenue of the Cities, East Moline (VIP)

**Weather report**  
Today's forecast calls for mostly sunny skies with a high of 80 and north winds at 5 to 7 mph.

**Numbers game**  
669 The number of 300-plus seedings by the 150 pros on Thursday  
371 The longest drive of the day, by Steve Frazier on No. 14  
3 The number of eagles at No. 2 Thursday by Troy Matteson, Carlos Franco and Kent Jones  
80 The score posted Thursday by Len Maltbie, who in seven previous trips to the John Deere Classic had an average round of 68.64  
2 The number of puts Cassie Peckham made in ending at 67  
2 The number of double bogeys recorded Thursday by defending JDC champion John Senden

**Seashells**  
"I used to be a club banger, beer, ball, cater out there. Now if I hit a bad shot, I think I've seen so many of them, I'm just used to them. I go 'Oh what the hell, I've seen that before.'"  
— Retiring leader Neal Lancaster on his making as a player

**Birdies for charity count**  
Thursday: 507  
Total: 695

**Buzz**  
Scott Lavery Got the latest from the JDC at ocltimes.com/blog.  
Blog Get a hole-by-hole rundown of Deere Run from the pros at ocltimes.com/touralerts.

Richard Lee, 16, struggled Thursday in the first round of the John Deere Classic. He shot a 5-over-par 76, 12 shots behind the leader.  
Jeff Cook  
QUAD-CITY TIMES



# Chase for redemption

Older pros get chance to revive careers at JDC

By Craig DeVittore  
QUAD-CITY TIMES

SILVIS, Ill. — The PGA Tour has billed its 2007 campaign as "The Chase for the FedEx Cup," but just past the first turn, this year's \$4.1 million John Deere Classic is shaping up for several as a race for redemption instead.

Starting with first-round leader Neal Lancaster, a former Tour winner who is ranked 836th in the world, the first page of the first-day leaderboard is filled by a few players looking to resurrect their careers.

Among the charms of a field-challenged event like this is the opportunity for players with limited playing opportunities to step up and be recognized. Count Paul Stankowski and Bob May in that group, as well.

Lancaster, a good 'ol boy and car racing fan, waved the yellow flag on early high hopes, however, after gunning his way to the forefront with an eight-birdie, one-bogey morning round of 7-under-par 64 at TPC Deere Run.

"It's kind of like the first turn at the Daytona 500," he said. "We haven't even taken off yet."  
Two-time Tour winner Stankowski, who still is battling back from a wrist injury that stalled his career two years ago, was joined at 6-under 65 by lifetime Tour winner Kenny Perry, four-time winner Duffy Waldorf, big-hitting third-year pinger

**FIRST-ROUND LEADERS**

Neal Lancaster	31-33-64	-7
Paul Stankowski	31-34-65	-6
Kenny Perry	31-34-65	-6
Scott Gutschewski	33-32-60	-6
Duffy Waldorf	31-34-65	-6
Jason Dufner	31-35-66	-5
Bob May	33-33-66	-5
Kevin Sutherland	33-33-66	-4

Tenets players led at Expanded leaders cards at PINE CZ



Bob May

Scott Gutschewski and Nationwide Tour graduate Jason Dufner  
May — who was nipped by Tiger Woods in a playoff for the third leg of the Tiger Slam at the 2003 PGA Championship but later sidelined for nearly three years by back surgery — was joined in a tie for sixth by fellow 65 shooter Kevin Sutherland.

A group of 12 players at 5-under 67 includes three former Deere Run runners-up — Briny Baird, Kirk Triplett and Jonathan Byrd — as well as Paul Goydos, one of five players in the field with a 2007 win in his pocket.

Prominent players who still bid to join the lead lap when play sees off at 7 a.m. today include reigning Masters champ Zach Johnson (76), Camillo Villegas (70), Todd Hamilton (71), John Daly (72), Bernhard Langer (73), Woody

JDC | C13



Neal Lancaster putts Thursday on hole No. 18 at TPC Deere Run during the first round of the John Deere Classic.  
Larry Fisher/QUAD-CITY TIMES

Kevin Sutherland lines up a putt Thursday on the 18th hole. Sutherland is two shots off the lead at 5 under par.  
John Schmitz/QUAD-CITY TIMES

**VIEWPOINT**

## Teens can't keep up with old guys

SILVIS, Ill. — You've heard that old expression that it's a young man's game? Whoever said that wasn't talking about golf.  
Not at the TPC Deere Run on Thursday anyway.  
The 16-year-old high school kid who lives in the suburbs of Phoenix carded a 5-over-par 76 in the opening round of the John Deere Classic and said he just got worn out in some uncharacteristically cool conditions.

His 18-year-old friend, who has yet to go through freshman orientation at UCLA, was only two strokes better, although he



DON DORSIE

didn't attribute his back-nine 69 to fatigue.  
The handful of other early 20s players in the field played slightly better. Some of them might even make the cut.  
Meanwhile, a 44-year-old two-

packs-a-day smoker who pretty much lives on Mountain Dew sits atop the leaderboard. He didn't get tired.  
But Richard Lee certainly did.  
Lee is the most intriguing of the youngsters entered in this week's 37th annual tournament. At 16, he is the youngest male player to appear in the event — Michelle Wie was younger — and he already has turned pro.

He played in the U.S. Open as an amateur earlier this summer, withdrawing in the second round because of a wrist injury.

He turned pro after that and earned his first pro paycheck — a modest \$1,207 — three weeks ago in the Greater Vancouver Charity Classic on the Canadian Tour.

The son of a Korean immigrant who grew up in Vancouver, British Columbia, Lee now lives in Chandler, Ariz. He won the Arizona Class 5A state title last fall despite the fact that he is home-schooled, but admits that he is now "bored" with amateur golf.

But he might be in over his head in the pros. Better to be bored than bad, which is what

DORSIE | C2

AT&T NATIONAL

# Appleby up 2 strokes

Woods way behind at own tournament

BETHESDA, Md. (AP) — Tiger Woods displayed his full repertoire of near-mis reactions: the putter flip, the 360-degree spin with head to the sky, the drop to his knees, and head bowed with hands on knees.

His mammoth gallery settled on just one way to react: the very loud moan.

That's what happens when the host of the tournament has six birdie putts that stop less than a foot from the hole and two more that settle less than 2 feet away. Woods 68 Saturday at the AT&T National looks boring on the surface — 15 pars and only two birdies — but the sights and sounds told the story of a round that was inches away from being something spectacular.

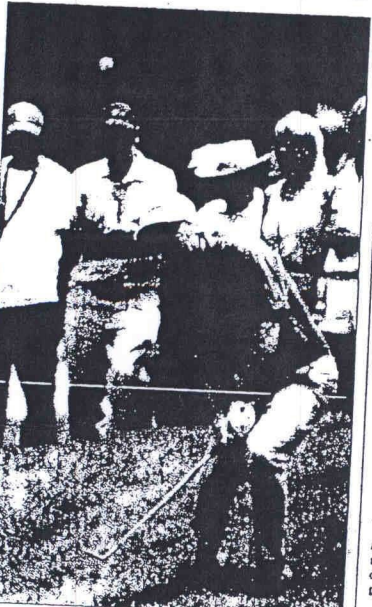
"I turned a 63 or 64 into a 69 very quickly," Woods said.

For Woods to win the inaugural version of his own PGA Tour event, he'll have to stage the biggest final-day comeback of his pro career. He's never won when trailing by more than five strokes after the third round, but he's currently at 1 under for the tournament — seven shots behind leader Stuart Appleby.

"It's frustrating, it really is," Woods said. "There's no denying that. When you hit good putts and you think they are looking dead center, they kind of wander left or right. It is frustrating. And that's the way it goes some times. You have to be patient, which I was all day. I'm still in the ballgame."

Many groups behind the women's moops, Appleby roller-coastered his way to a two-stroke lead. The Aussie, playing with a hairline crack in his driver, made five birdies and three bogeys in a 3-under round of 68 for a 201 total, putting him in position to win the event that bears the name of his good friend and neighbor in Orlando, Fla.

"I'm not concerned who honors an event or who titles an event or anything," said Appleby, seeking his ninth tour



Stuart Appleby swings toward the No. 2 hole Saturday at the AT&T National in Bethesda, Md.

victory and first of 2007. "Revenue-wise, we've never won or had a drought, it feels great. And not winning feels a little shallow and empty. So if I could join all the good feelings in winning and with Tiger, his inaugural event — I'm sure I'll let him know. He'll be back at me, trust me. He's got a quick tongue."

Second-place K.J. Choi is two strokes off the lead. Choi trailed Appleby by five following a bogey at the 16th, but birdied the next three holes to close a 78 on a hot and humid afternoon at Congressional Country Club.

Steve Stricker shot a 67 and is three strokes behind Appleby. Mike Weir, who also carded 67, is four off the lead in fourth.

After a tough day putting in a round of 73 on Thursday, Woods weighted down his putting with lead tape and rebounded with a 66 on Friday. On Saturday, the putter was so the tantalizing verge of brilliance: A 6-footer lippled out at No. 3, an 11-footer at No. 4, a 12-footer on the edge, and an 18-footer at No. 15 had Woods sweating out lead after it skirted the hole.

# AUSSIES

Continued from Page B1

of 21 million people are fully exempt on the world's most competitive professional golf circuit, with another 16 coming up behind them on the Triple A Nationwide Tour.

A sum total of 22 countries are represented among the PGA Tour's 76 international members and the next closest total to Australia's 24 is South Africa, with nine.

## World domination

Plus, the Aussies aren't just showing up. They are showing up on top.

Senden's JDC victory was one of eight wins scored by Australians in the PGA Tour's 48 official events in 2006, and, led by No. 4 Adam Scott and No. 8 Geoff Ogilvy, seven Aussies rank among the world's 35 best players at the moment.

The numbers still amaze Robert Allenby, a 35-year-old four-time Tour winner who just over a decade ago was part of the second wave of the Australian Invasion, following in the footsteps of Greg Norman, Steve Elkington and Ian Baker-Finch and a few others.

"You have that in L.A. alone," Allenby said of his nation's 21 million head count. "Half (the Australian) population plays golf."

And there is a reason for that, Allenby said.

"The most important thing is golf is such a cheap game in Australia," he said. "I mean it is so easy for people who don't have money (to play). My parents had no money. I mean nothing. So I played with the oldest set of clubs in the world. That's how 80 to 90 percent of the Australians grow up, with hand-me-downs. And we play courses that are \$5 to \$10 to play."

Factor in the inspiration of watching Norman rise to the top of his sport two decades ago and you had a lot of athletic young Aussies swinging

## AUSSIES IN THE JDC

Steve Alan, Steven Bowditch, Andrew Buckle, Gavin Coles, Matthew Goggin, Paul Gow, Nathan Green, Stephen Loney, Peter Lonard, Jermol Lyle, John Senden, Paul Sheehan, Michael Sim.

golf clubs some 20 years ago.

"When I first started playing golf back in the early '80s, that was when the Shark first burst on the scene," Senden said of the swashbuckling, white-haired icon. "With his strength, his demeanor and his looks, we all looked up to him. He was our idol and he has been great for golf world-wide and great for Australian golf."

## Programmed for success

Better still for the development of the game Down Under was the coincidental introduction of a pair of state-sponsored programs, the Australian Institute of Sport and the Victorian Institute of Sport, which offered intensive hands-on instruction and expensive financial support to teen-aged Aussies with promise.

"They got coached, they got fitness training, they got nutritional advice," Senden said. "They get the full package to become a professional player."

Allenby was among the first potential stars enrolled in the Victorian program.

"The whole experience, what the Institute was able to give us was pretty special," he said.

Noting instructors such as Steven Bann, Dale Lynch, Charles Jamieson and Sandy Jamieson remain involved with the institutes today even while serving as well-paid swing coaches to many of the Aussies on the PGA Tour.

Those teachers don't just teach their prodigies to swing well.

"You look at every Aussie who plays on this Tour and look how good their swings are," Allenby said. "They are pretty good. Pretty sound."

## Navarro knows

For more than 15 years,

Moline's Tony Navarro has had a birds-eye view of two of the most picturesque swings in golf. He caddied more than a decade for Norman and has been with the sweet-swinging Scott since 2004.

"I saw them all in Australia before they came on Tour," the highly regarded caddie said of today's blossoming crop of Aussie standouts. "They play a great game over there and they learn more than golf."

In addition to sound instruction, he said the early opportunity the institutes give young Australians to compete overseas is a critical component to the nation's success.

"They seem to grow up a little faster," Navarro noted. "They learn to play in different conditions, on different soils, different turfs. When they do get on Tour they are more ready."

And the PGA Tour is where they want to be. What used to be the Australian Tour has merged with a number of Far East circuits to become the Australasian Tour, but it is not there fame and fortune can be found.

Aussies from different generations — notably Peter Thomson and David Graham — used to straddle the Atlantic, playing in Europe as well as America.

Norman, Elkington and their ilk changed all that.

"It used to be more common to go and play in Europe," Elkington said of Aussie playing options. "But I think now with the increase in (PGA Tour) purses and the easier travel, Australians have put all their interest here. We have seen all these guys follow their friends along and now we've got (40) of them."

And plenty more to come. "There are so many good, young players coming out of there," Navarro said.

Contact Craig DeVilbiss at cdevilbiss@qtimes.com or (563) 333-2816. Comment on this story at qtimes.com.

## U.S. SENIOR OPEN

# Watson works with strong winds

Legends tames gusts, carries 3-shot lead

HAVEN, Wis. (AP) — Tom Watson knows all about playing in the wind, and he has five British Open titles to prove it.

When the flags finally started flapping at Whistling Straits on Saturday, it shouldn't have been a surprise that Watson stood at the top of the U.S. Senior Open leaderboard.

The course that looks more like a potential British Open site than a slice of central Wisconsin found its signature windy "whistle" on Saturday and Watson handled it better than the players trying to chase him down.

"I've been pretty good at that over my career," Watson said. "So, the conditions here were kind of like that today."

On a day when only eight players scored under par, Watson shot a 1-over par 73 to carry a 3-shot lead into the final round today. Watson is 1 under for the tournament, and his closest pursuer is Loren Roberts at 1 under. John Russ, Sam Torrance and Vicente Fernandez are tied at 3 under.

After relatively docile conditions through the first two rounds, players had to contend with winds that blew at an esti-



Tom Watson acknowledges the crowd after a birdie on the 10th hole Saturday at the U.S. Senior Open.

mated 10-20 mph and got stronger throughout the day. Even harder winds are forecast for today's final round — an advantage, perhaps, for Watson.

Watson frustrated away his early lead, shooting 3-over par on the front nine and dropping into a tie with Roberts. But Watson recovered on the back nine and regained the three-shot lead he held going into Saturday when Roberts made a double bogey on the par-3 17th.

## REPORT

Norman has 2-stroke lead after 3rd round of European Open  
STRAFFORD, Ireland (AP) — Seven members of Denmark backed out of the lead here today to shoot a 7-under 63 Saturday for a two-stroke lead in the third round of the European Open. The 33-year-old Danish golfer, who played well in the first two rounds, missed a 3-foot putt on the 10th hole and a 12-foot putt on the 11th hole to close at 12 holes.

# PARKING UPDATE

For more information, contact the City of Moline at 314-1111

	MOLINE HIGH SCHOOL 3800 Ave of the Cities Moline, IL	QUAD CITY DOWNS 5005 Morton Drive East Moline, IL	VP PREFERRED Across from TPC Main Entrance	VP PARKING R.I. CITY Fairgrounds, Archer Drive & Avenue of the Cities East Moline, IL
MONDAY July 9th	CLOSED	6 A.M. - 6 P.M.	6 A.M. - 6 P.M.	6 A.M. - 6 P.M.
TUESDAY July 10th	CLOSED	6 A.M. - 6 P.M.	6 A.M. - 6 P.M.	6 A.M. - 6 P.M.
WEDNESDAY July 11th	CLOSED	6 A.M. - 10 P.M.	6 A.M. - 10 P.M.	6 A.M. - 10 P.M.
THURSDAY July 12th	6 A.M. - 11 P.M.	6 A.M. - 11 P.M.	6 A.M. - 11 P.M.	6 A.M. - 11 P.M.
FRIDAY July 13th	6 A.M. - 11 P.M.	6 A.M. - 11 P.M.	6 A.M. - 11 P.M.	6 A.M. - 11 P.M.
SATURDAY July 14th	6 A.M. - 11 P.M.	6 A.M. - 11 P.M.	6 A.M. - 11 P.M.	6 A.M. - 11 P.M.
SUNDAY July 15th	6 A.M. - 8 P.M.	6 A.M. - 8 P.M.	6 A.M. - 8 P.M.	6 A.M. - 8 P.M.
DROP OFF LOCATION	MAIN GATE	MAIN GATE	CLUBHOUSE	CLUBHOUSE

**2007 HIGH OCTANE Race Events**  
DAYTONA COMES TO IOWA